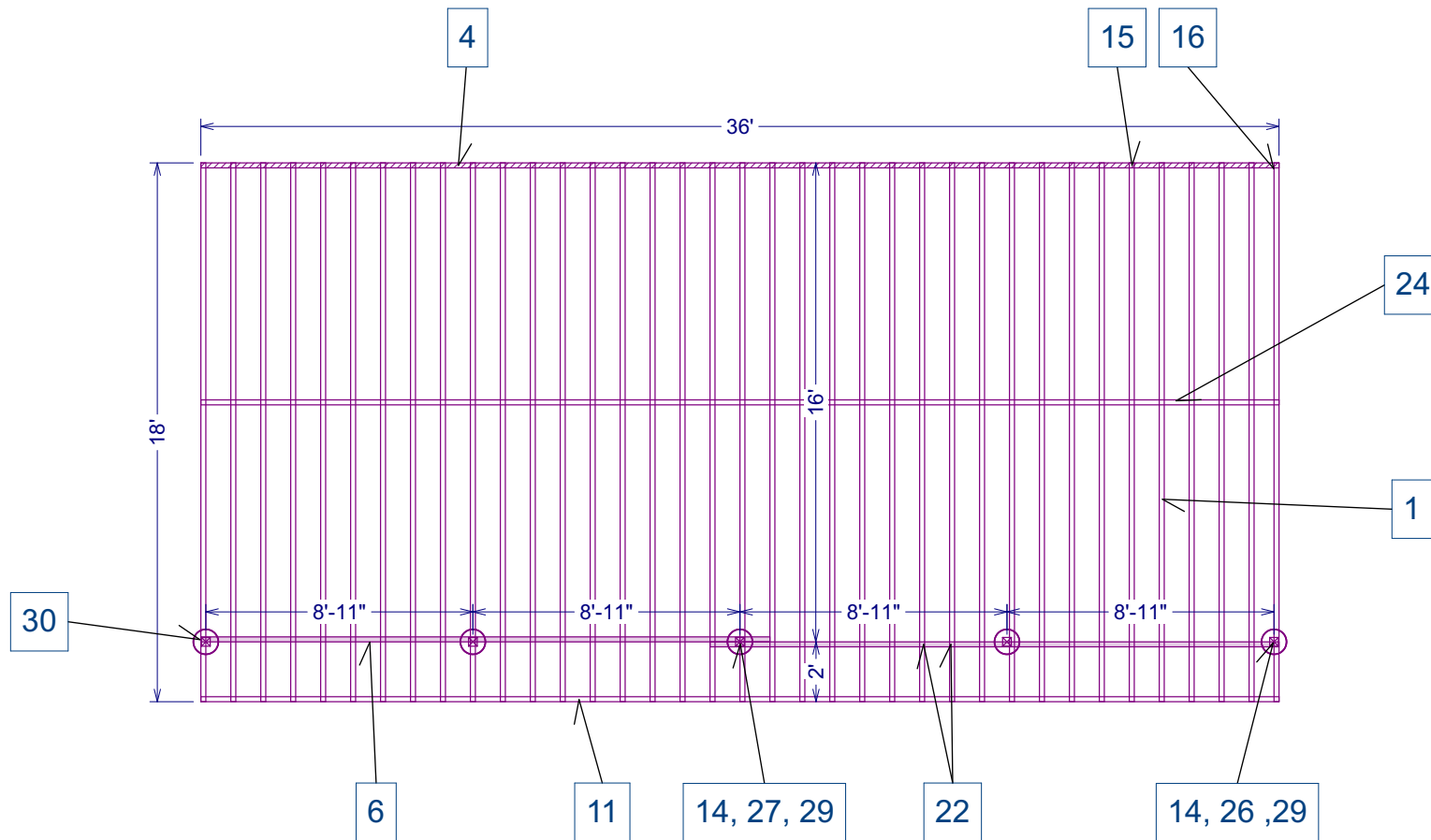


# Deck Framing 18' x 36'



**Notes:**

Refer to Fortress Framing Installation guide [www.fortressframing.com](http://www.fortressframing.com)  
 All measurements are reference only and must be verified.  
 Piers - Refer to local building codes.  
 DO NOT exceed spans; refer to Fortress Framing Span Charts for beam and joist span information.  
 Additional blocking may be required depending on railing installation requirements.  
 Note the Total Load PSF rating. This may need to be adjusted based on Dead Load and Live Load requirements and will vary by region check local building codes.  
 All attached material lists are estimates only and should be verified by a licensed contractor.

SHEET:	SCALE:	DATE:	DRAWINGS PROVIDED BY:	Case Study 18X36		<table border="1"> <thead> <tr> <th>REVISION</th> <th>DATE</th> <th>BY</th> <th>DESCRIPTION</th> </tr> </thead> <tbody> <tr><td> </td><td> </td><td> </td><td> </td></tr> <tr><td> </td><td> </td><td> </td><td> </td></tr> <tr><td> </td><td> </td><td> </td><td> </td></tr> </tbody> </table>	REVISION	DATE	BY	DESCRIPTION													PSF 75
REVISION	DATE	BY	DESCRIPTION																				
1	1/6"=1'	1/26/2023	Chris Sullins																				

**SPECIAL NOTE:** This drawing is for estimate only and must be verified by a licensed contractor and/or engineer per local building codes.


# Product Reference Sheet

Part	Part Description	Part	Part Description
1	EVOLUTION 16 Gauge Galvanized Powder Coated Joist	20	EVOLUTION-DBL HANGER BRACKET
2	Not Applicable	21	EVOLUTION-F10 "ANGLE" BRACKET (BOX 10)
3	EVOLUTION-S-LEDGER Non-Punched	22	EVOLUTION-12OC BLOCKING
4	EVOLUTION-12OC-S-LEDGER (Hatched)	23	EVOLUTION-16OC BLOCKING
5	EVOLUTION-16OC-S-LEDGER (Hatched)	24	EVOLUTION-12OC STRAP
6	EVOLUTION-Single Dropped BEAM 2X11 (Shaded)	25	EVOLUTION-16OC STRAP
7	EVOLUTION-Double Dropped BEAM 2X11 (Shaded)	26	EVOLUTION-SNGL BEAM/POST BRACKET
8	EVOLUTION-Single Flush BEAM 2X11 (Shaded)	27	EVOLUTION-DBL BEAM/POST BRACKET
9	EVOLUTION-Double Flush BEAM 2X11 (Shaded)	28	EVOLUTION-DBL BEAM TRACK-4' (2 PACK)
10	EVOLUTION-Non-Punched U-RIM JOIST-2X6	29	EVOLUTION-3.5" POST/PIER BRACKET
11	EVOLUTION-12OC U-RIM JOIST-2X6	30	EVOLUTION-BEAM CAP
12	EVOLUTION-16OC U-RIM JOIST-2X6	31	EVOLUTION-JOIST CAP
13	EVOLUTION-CURVE-RIM JOIST-2X6	32	EVOLUTION 3/4" BLACK SELF TAPPING SCREW
14	EVOLUTION-POST 3.5" X 3.5"	33	FF-EVOLUTION-7"/11" STAIR BRACKET
15	EVOLUTION-LEDGER BRACKET	34	FF-EVOLUTION-7-3/4"/11" STAIR BRACKET
16	EVOLUTION-F50 BRACKET	35	FF-EVOLUTION-ADJUSTABLE STAIR BRACKET
17	EVOLUTION-45 DEG BRACKET	36	FF-EVOLUTION-STAIR STRAP
18	EVOLUTION-RIM JOIST BRACKET	37	FF-EVOLUTION-STAIR ANCHOR BRACKET
19	EVOLUTION-SNGL HANGER BRACKET	38	FF-EVOLUTION-48" STAIR TRAY

For Installation Instructions & Video please refer to  
[www.fortressframing.com/resources](http://www.fortressframing.com/resources)

**Notes:**

Refer to Fortress Framing Installation guide [www.fortressframing.com](http://www.fortressframing.com)  
 All measurements are reference only and must be verified.  
 Piers - Refer to local building codes.  
 DO NOT exceed spans; refer to Fortress Framing Span Charts for beam and joist span information.  
 Additional blocking may be required depending on railing installation requirements.  
 Note the Total Load PSF rating. This may need to be adjusted based on Dead Load and Live Load requirements and will vary by region check local building codes.  
 All attached material lists are estimates only and should be verified by a licensed contractor.

SHEET:	SCALE:	DATE:	DRAWINGS PROVIDED BY:							
2	1/6"=1'	1/26/2023	Chris Sullins	Case Study 18X36						PSF 75

**SPECIAL NOTE:** This drawing is for estimate only and must be verified by a licensed contractor and/or engineer per local building codes.

# Materials List - Deck Frame

Qty	Item Number	Item Description	Notes	Notes
37	181118161	FF-EVOLUTION-2X6 JOIST-18'-16GA-PC	16 Gauge Powder Coated Joist	
2	182112141	FF-EVOLUTION-12OC-S-LEDGER-12'	Ledger with 12" O.C. Pre-punched Spacing	
2	184120161	FF-EVOLUTION-BEAM 2X11-20'		
5	185008141	FF-EVOLUTION-U-RIM JOIST-2X6-8'	Rim Joist (Track) without Pre-punched Spacing	
3	186110111	FF-EVOLUTION-POST 3.5" X 3.5"-10'		
35	183011401	FF-EVOLUTION-LEDGER BRACKET	Bracket fits through Ledger and used in other Locations	
4	183021601	FF-EVOLUTION-F50 BRACKET	L-Shaped Bracket used with Ledger and other Locations	
1	183041601	FF-EVOLUTION-F10 "ANGLE" BRACKET (BOX 10)	Used at Beam/Joist Blocking on non standard spacing	
36	188122001	FF-EVOLUTION-12OC BLOCKING	Pre-spaced Blocking above Beam	
9	187104201	FF-EVOLUTION-12OC STRAP	4' joist mid-span blocking	
4	183161601	FF-EVOLUTION-SNGL BEAM/POST BRACKET	Connects Single Beam to Post	
1	183261601	FF-EVOLUTION-DBL BEAM/POST BRACKET	Connects Double Beam to Post	
5	183351601	FF-EVOLUTION-3.5" POST/PIER BRACKET	For anchoring post into footings	
4	183112001	FF-EVOLUTION-BEAM CAP	Covers end of Beams	
4	183990341	FF-EVOLUTION 3/4" BLACK SELF TAPPING SCREW (BAG 250)	B3/4" Hex Head Self Tapping Screw	
4	183280601	FF-Black Sand (BKSND) Aerosol Touch Up Paint	Color matching paint for powder coated Evolution parts	

For Installation Instructions & Video please refer to [www.fortressframing.com/resources](http://www.fortressframing.com/resources)

**Notes:**

Refer to Fortress Framing Installation guide [www.fortressframing.com](http://www.fortressframing.com)  
 All measurements are reference only and must be verified.  
 Piers - Refer to local building codes.  
 DO NOT exceed spans; refer to Fortress Framing Span Charts for beam and joist span information.  
 Additional blocking may be required depending on railing installation requirements.  
 Note the Total Load PSF rating. This may need to be adjusted based on Dead Load and Live Load requirements and will vary by region check local building codes.  
 All attached material lists are estimates only and should be verified by a licensed contractor.

SHEET:	SCALE:	DATE:	DRAWINGS PROVIDED BY:						
3	1/6"=1'	1/26/2023	Chris Sullins	Case Study 18X36					PSF 75

**SPECIAL NOTE:** This drawing is for estimate only and must be verified by a licensed contractor and/or engineer per local building codes.